

6318705

FILED
Map 12 334PM 1979
Harris County, Texas

STATE OF TEXAS
COUNTY OF HARRIS

BEFORE ME, the undersigned authority, on this 12th day of October, 1979, personally appeared _____, known to me to be the person whose name is subscribed to the foregoing instrument, and acknowledged to me that he executed the same for the purposes and consideration therein expressed.

My commission expires _____.

ATTEST:

Notary Public in and for the State of Texas

STATE OF TEXAS
COUNTY OF HARRIS

BEFORE ME, the undersigned authority, on this 12th day of October, 1979, personally appeared _____, known to me to be the person whose name is subscribed to the foregoing instrument, and acknowledged to me that he executed the same for the purposes and consideration therein expressed.

My commission expires _____.

ATTEST:

Notary Public in and for the State of Texas

STATE OF TEXAS
COUNTY OF HARRIS

BEFORE ME, the undersigned authority, on this 12th day of October, 1979, personally appeared _____, known to me to be the person whose name is subscribed to the foregoing instrument, and acknowledged to me that he executed the same for the purposes and consideration therein expressed.

My commission expires _____.

ATTEST:

Notary Public in and for the State of Texas

STATE OF TEXAS
COUNTY OF HARRIS

BEFORE ME, the undersigned authority, on this 12th day of October, 1979, personally appeared _____, known to me to be the person whose name is subscribed to the foregoing instrument, and acknowledged to me that he executed the same for the purposes and consideration therein expressed.

My commission expires _____.

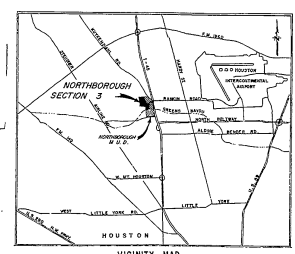
ATTEST:

Notary Public in and for the State of Texas

1. A one-half acre (1/2) parcel is hereby dedicated to the public to be used as a park or playground. The dedication is made by the owner of the land, and the public is hereby notified that the land is dedicated to the public and that the public may use the land for the purposes stated herein.

2. A one-half acre (1/2) parcel is hereby dedicated to the public to be used as a park or playground. The dedication is made by the owner of the land, and the public is hereby notified that the land is dedicated to the public and that the public may use the land for the purposes stated herein.

3. A one-half acre (1/2) parcel is hereby dedicated to the public to be used as a park or playground. The dedication is made by the owner of the land, and the public is hereby notified that the land is dedicated to the public and that the public may use the land for the purposes stated herein.

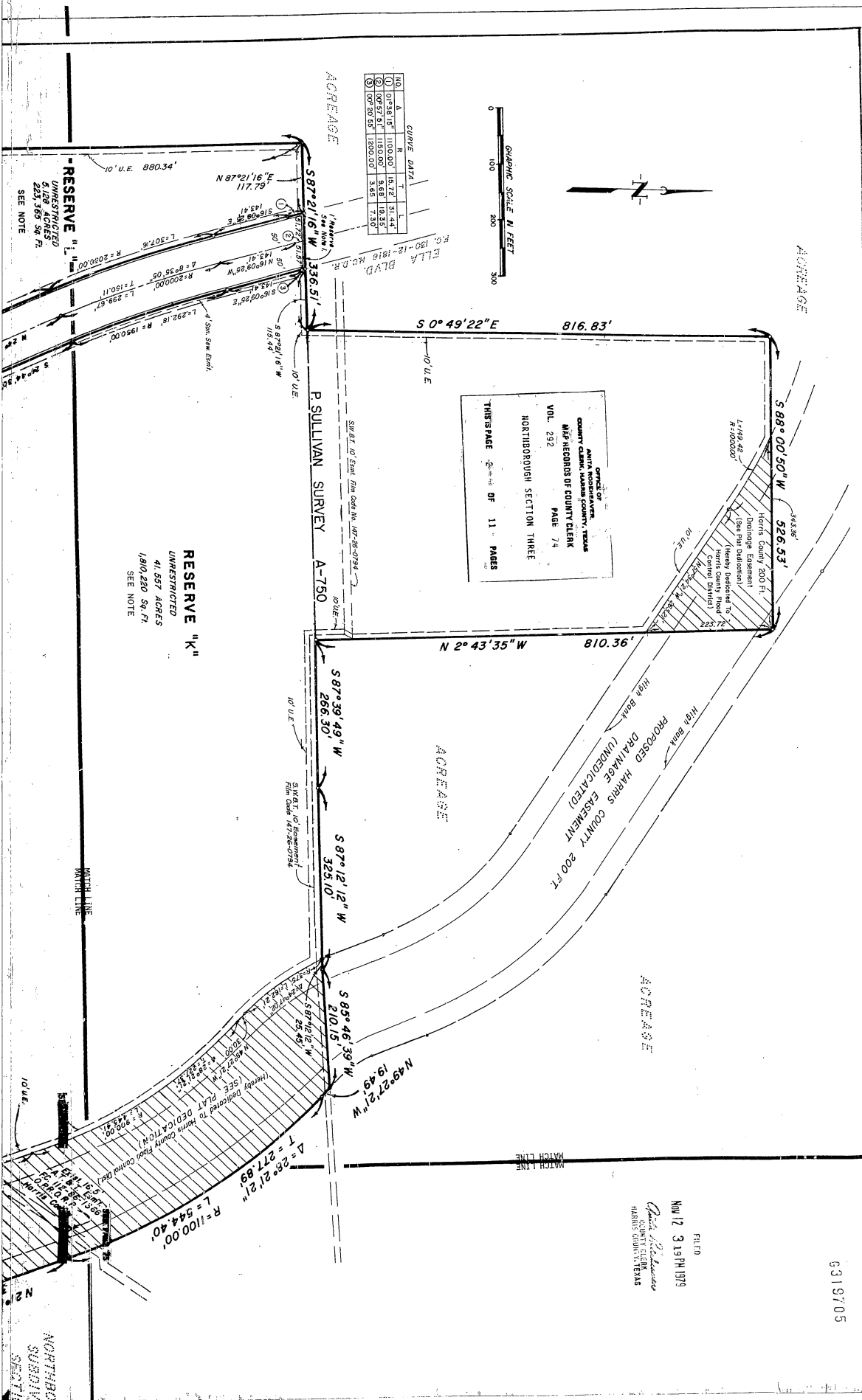


NORTHBOROUGH SECTION 3

A SUBDIVISION OF 244,745 ACRES OF LAND CONTAINING 193,714 ACRES OF UNRESTRICTED RESERVE OUT OF THE B.B. & C.R. SURVEY, A-74; THE DANIEL O'NEAL SURVEY, A-67 AND THE SULLIVAN SURVEY A-750 HARRIS COUNTY, TEXAS. 9 RESERVES, 0 BLOCKS, 0 LOTS

ENGINEER
J. H. ANDERSON & COMPANY, INC.
Houston, Texas

NORTHBOROUGH
SECTION 3
VOL. 193, PGS. 47-48 N.C.S.R.



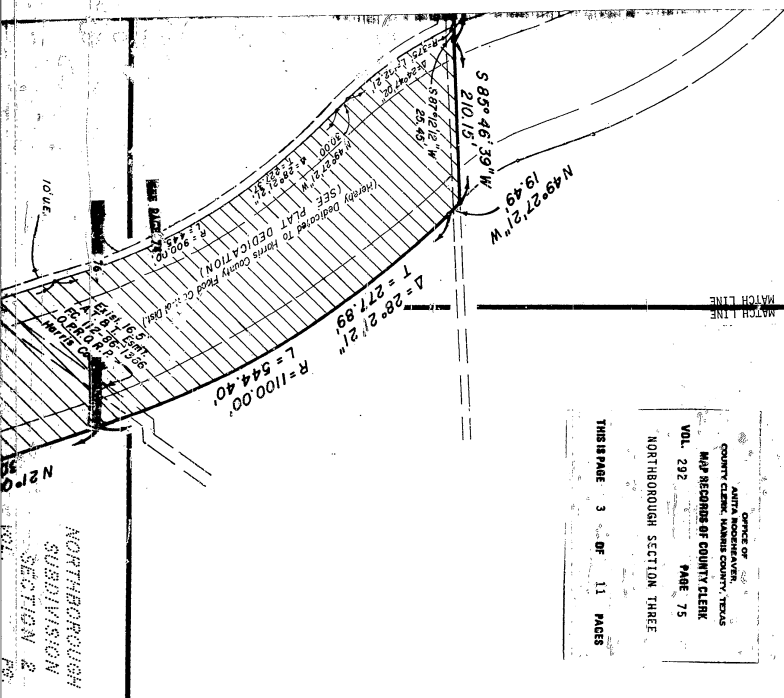
6319705

12:00

ACREAGE

FILED
NOV 12 3 19 PM 1979
COUNTY CLERK
HARRIS COUNTY, TEXAS

OFFICE OF
COUNTY CLERK, HARRIS COUNTY, TEXAS
MAP RECORDS OF COUNTY CLERK
VOL. 292 PAGE 75
NORTHBOROUGH SECTION THREE
THIS PAGE 3 OF 11 PAGES



STATE OF TEXAS
COUNTY OF HARRIS

We, Charles R. Ackerman, Vice President, and Gloria L. Morrill, Assistant Secretary, being officers of Gibraltar Savings Association, grant of the 214.7348 acre tract described in the above-captioned plat of said property according to all times, dedications, restrictions and notations on said maps or plat and hereby dedicate to the use of the public forever all streets, alleys, parks, water courses, drains, easements and public places shown thereon for the purposes and considerations therein expressed, and hereby bind ourselves, heirs and assigns to warrant and forever defend the title to the land so dedicated.

SEE X BELOW

FURTHER, we do hereby declare that all parcels of land designated as lots on this plat are originally intended for the construction of residential dwelling units thereon and shall be restricted for same under the terms and conditions of such restrictions filed separately.

FURTHER, we do hereby covenant and agree that all of the property within the boundaries of this plat shall be restricted to prevent the drainage of any septic tanks into any public or private street, road or alley or any drainage ditch, either directly or indirectly.

FURTHER, we do hereby dedicate to the public a strip of land fifteen (15) feet wide on each side of the easement shown on this plat for drainage purposes, giving the City of Houston, Harris County, or any other governmental agency, the right to enter upon said easement at any and all times for the purpose of construction and maintenance drainage facilities and structures.

FURTHER, we do hereby covenant and agree that all of the property within the boundaries of this plat and adjacent to any drainage easement, ditch, gully, creek or natural drainage way shall hereby be restricted to keep such drainage ways and easements clear of fences, buildings, plantings and other obstructions to the operations and maintenance of such drainage facilities, that such obstructing property be permitted to drain directly into this easement except by means of an approved drainage structure.

FURTHER, we, Gibraltar Savings Association, have complied with or will comply with the existing Harris County Road Law, Section 31-C, as amended by Chapter 8, Acts of the 63rd Legislature, 1969, and all other "Road Laws" on file with the Harris County Engineer and adopted by the Commissioners' Court of Harris County.

IN TESTIMONY WHEREOF, the Gibraltar Savings Association has caused these presents to be signed by Charles R. Ackerman, its Vice President, hereunto authorized, attested by its Assistant Secretary, Gloria L. Morrill and its common seal hereunto affixed this 29th day of August, 1979.

Gibraltar Savings Association
By *Charles R. Ackerman*
Charles R. Ackerman, Vice President
ATTEST
Gloria L. Morrill
Gloria L. Morrill, Assistant Secretary

STATE OF TEXAS
COUNTY OF HARRIS
BEFORE ME, the undersigned authority, on this day personally appeared
Charles R. Ackerman, Vice President, and Gloria L. Morrill, Assistant Secretary of the
Gibraltar Savings Association, known to me to be the persons whose names are subscribed to the foregoing instrument, and acknowledged to me that they executed the same for the purposes and considerations therein expressed.

ACREAGE

S 2° 41' 52" E

2998.13'

1957.79'

N 02° 41' 52" W

10' U.E. 880.34'

RESERVE "M"
UNRESTRICTED
24.032 ACRES
1,046,819 Sq. Ft.
SEE NOTE

RESERVE "L"
UNRESTRICTED
3,122 ACRES
223,365 Sq. Ft.
SEE NOTE

RESERVE "K"
UNRESTRICTED
41,557 ACRES
1,800,280 Sq. Ft.
SEE NOTE

RESERVE "N"
UNRESTRICTED
40,688 ACRES
1,772,369 Sq. Ft.

AMERICAN
COUNTY CLERK, HALL COUNTY, TEXAS
MAP RECORDS OF COUNTY CLERK
VOL. 292 PAGE 76
NORTHBOROUGH SECTION THREE
THIS IS PAGE 4 OF 11 PAGES

RANKIN ROAD
100' Right of Way Road Right of Way Previously Dedicated by Instrument
Of Record Under Clerk's File No. 6176470

MATCH LINE

MATCH LINE

RESERVE "O"
UNRESTRICTED
21,447 ACRES
934,224 Sq. Ft.
SEE NOTE

SEE PAGE 75

N 21° 06' 00" W
306.57'

MATCH LINE

MATCH LINE

MATCH LINE

MATCH LINE

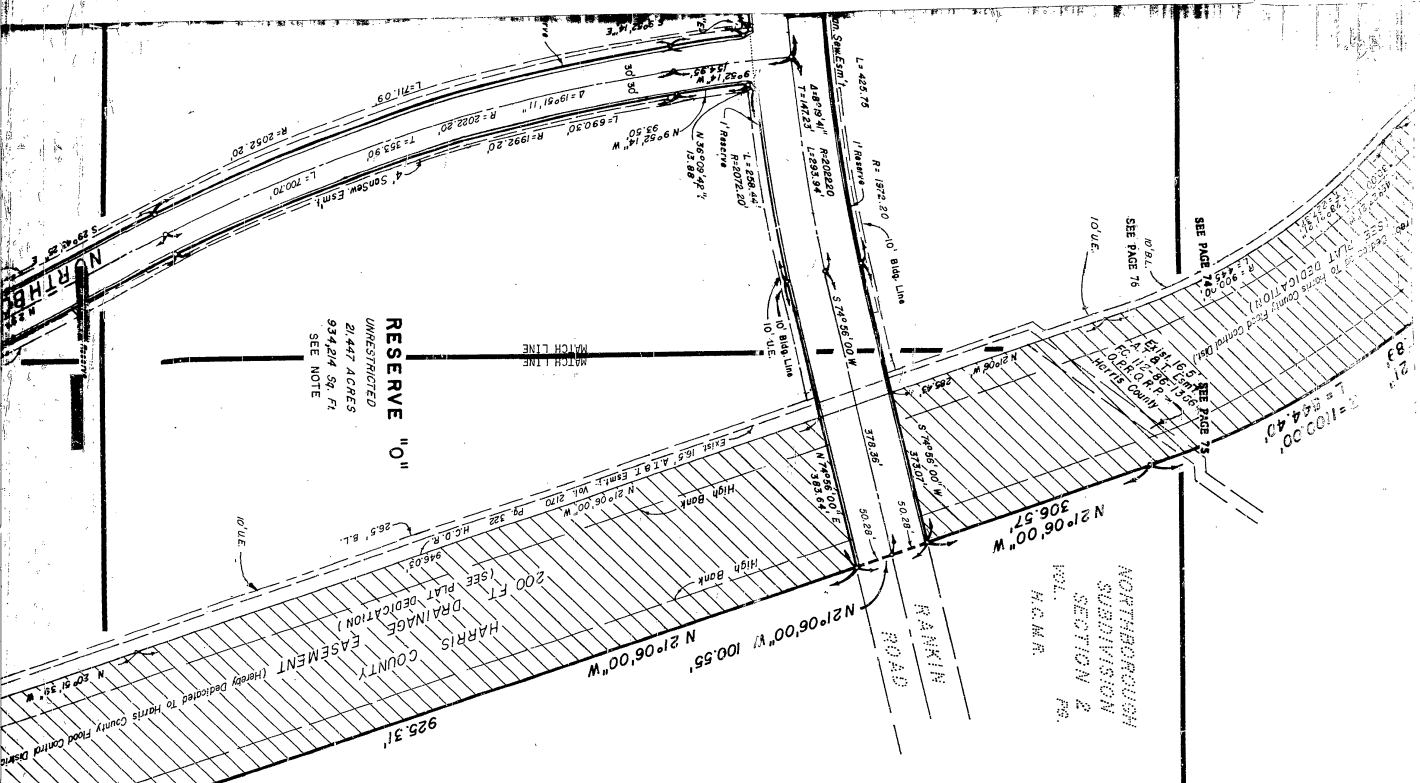
MATCH LINE

MATCH LINE

MATCH LINE

MATCH LINE

MATCH LINE



IN TESTAMENT WITNESSED, the undersigned having been duly sworn and authorized, attested by Charles R. Asternum, its Vice President, hereunto authorized, attested by its Assistant Secretary, Gloria L. Morrill, and its common seal hereunto affixed this 29th day of August, 1979.

By Charles R. Asternum
Charles R. Asternum, Vice President

ATTEST

By Gloria L. Morrill
Gloria L. Morrill, Assistant Secretary

STATE OF TEXAS
COUNTY OF HARRIS

BEFORE ME, the undersigned authority, on this day personally appeared Charles R. Asternum, Vice President, and Gloria L. Morrill, Assistant Secretary of the Charlter Savings Association, a corporation organized under the laws of the State of Texas, and acknowledged to me that they executed the same for the purposes and consideration therein expressed, and in the capacity therein expressed, and act and deed of said corporation.

GIVEN UNDER MY HAND AND SEAL OF OFFICE, this 29th day of August, 1979.

Notary Public
Notary Public in and for Harris County, Texas
Ingeborg Lovell
My commission expires Aug. 17, 1980

This is to certify that the City Planning Commission of the City of Houston, Texas has approved this plat and subdivision of Northborough, Section 3, shown hereon, with the laws of the State of Texas and the ordinances of the City of Houston, Texas, shown hereon, and authorized the recording of this plat this 29th day of August, 1979.



By Jim Stewart, Chairman
Attest: Patricia A. Jones, Secretary
Harris County Clerk

I, Richard P. Doss, County Engineer of Harris County, do hereby certify that the plat of this subdivision complies with all of the existing rules and regulations of this office with all of the laws included in the Harris County Road Law, also including Section 31-C, as amended by Chapter 614, Acts of 1974, 63rd Legislature.

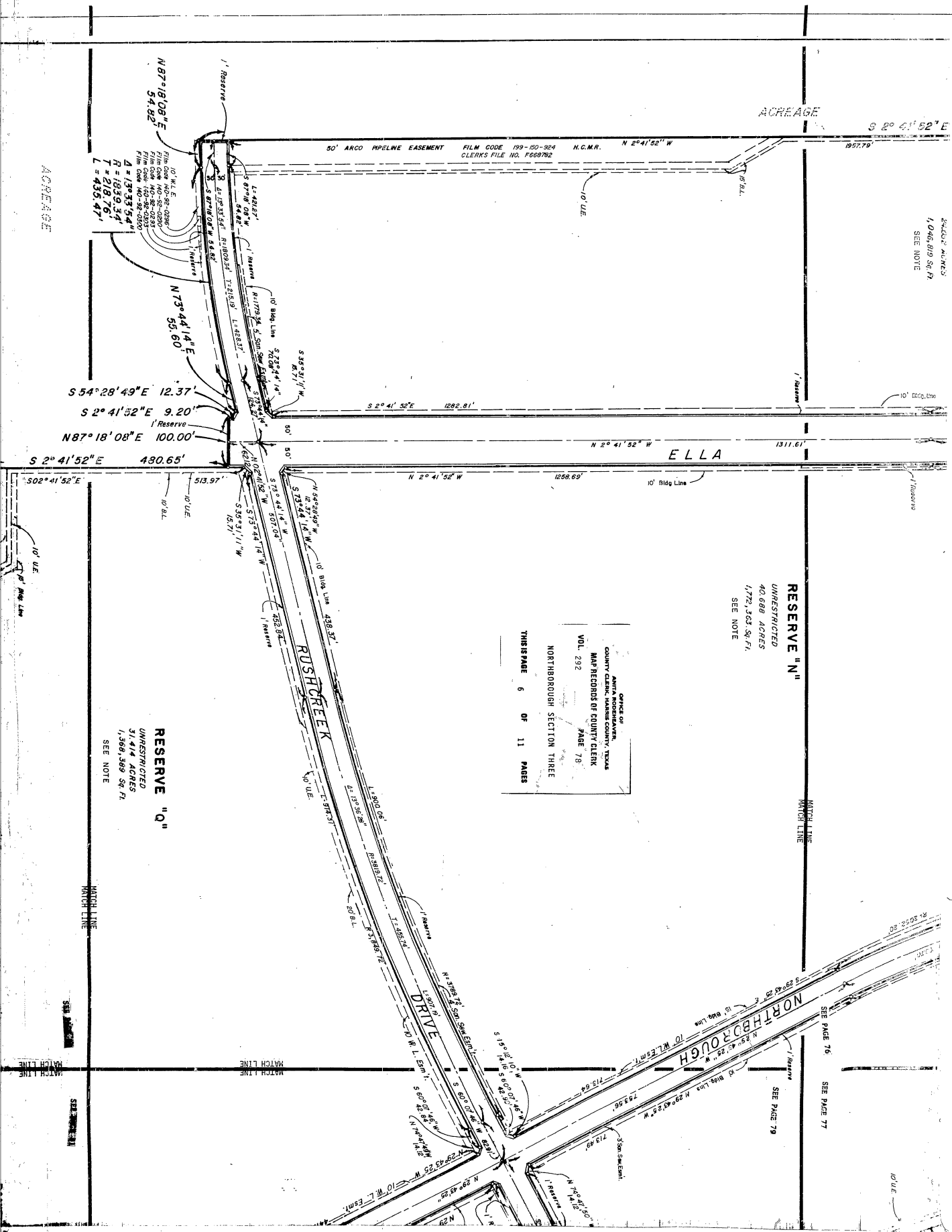
Richard P. Doss
Richard P. Doss, County Engineer

I, James B. Green, Flood Control Director of Harris County Flood Control District, Harris County, Texas, do hereby certify that the plat of this subdivision complies with requirements for internal subdivision drainage as set forth by the Harris County Flood Control District, and that the subdivision is hereby given for the purpose of drainage from this subdivision on the intercepting drainage artery or parent stream or any other area or subdivision within the watershed.

James B. Green
James B. Green, Flood Control Director

I, FURTHER, we do hereby certify that we are the owners of all property immediately adjacent to the boundaries of the above and foregoing plat of Northborough, Section 3, and do hereby make and establish a public utility easement for the use of the public forever all public utility easements shown in said adjacent owners.

FURTHER, we do hereby dedicate, for public utility purposes, an underground aerial easement five (5) feet in width extending upward from the ground level shown on the plat above the ground level upward, located adjacent to all public utility easements shown herein.



ACREAGE
S 2° 41' 52" E
1957.79'

EXCISE ALIENS
1,046,819 Sq. Ft.
SEE NOTE

ACREAGE

N 87° 18' 08" E
54.82'
10' W.L.E.
FILM CODE NO. 92-0286
FILM CODE NO. 92-0287
FILM CODE NO. 92-0288
FILM CODE NO. 92-0289
FILM CODE NO. 92-0290
FILM CODE NO. 92-0291
A = 13° 33' 54"
R = 1830.34'
T = 218.76'
L = 435.47'

S 54° 29' 49" E 12.37'
S 2° 41' 52" E 9.20'
N 87° 18' 08" E 100.00'
S 2° 41' 52" E 480.65'

RESERVE "Q"
UNRESTRICTED
31,414 ACRES
1,586,589 Sq. Ft.
SEE NOTE

OFFICE OF
JANIS KOSKOVICH
COUNTY CLERK, HARRIS COUNTY, TEXAS
MAP RECORDS OF COUNTY CLERK
VOL. 292 PAGE 78
NORTHBOROUGH SECTION THREE
THIS IS PAGE 6 OF 11 PAGES

RESERVE "N"
UNRESTRICTED
40,688 ACRES
1,772,363 Sq. Ft.
SEE NOTE

MATCH LINE
MATCH LINE

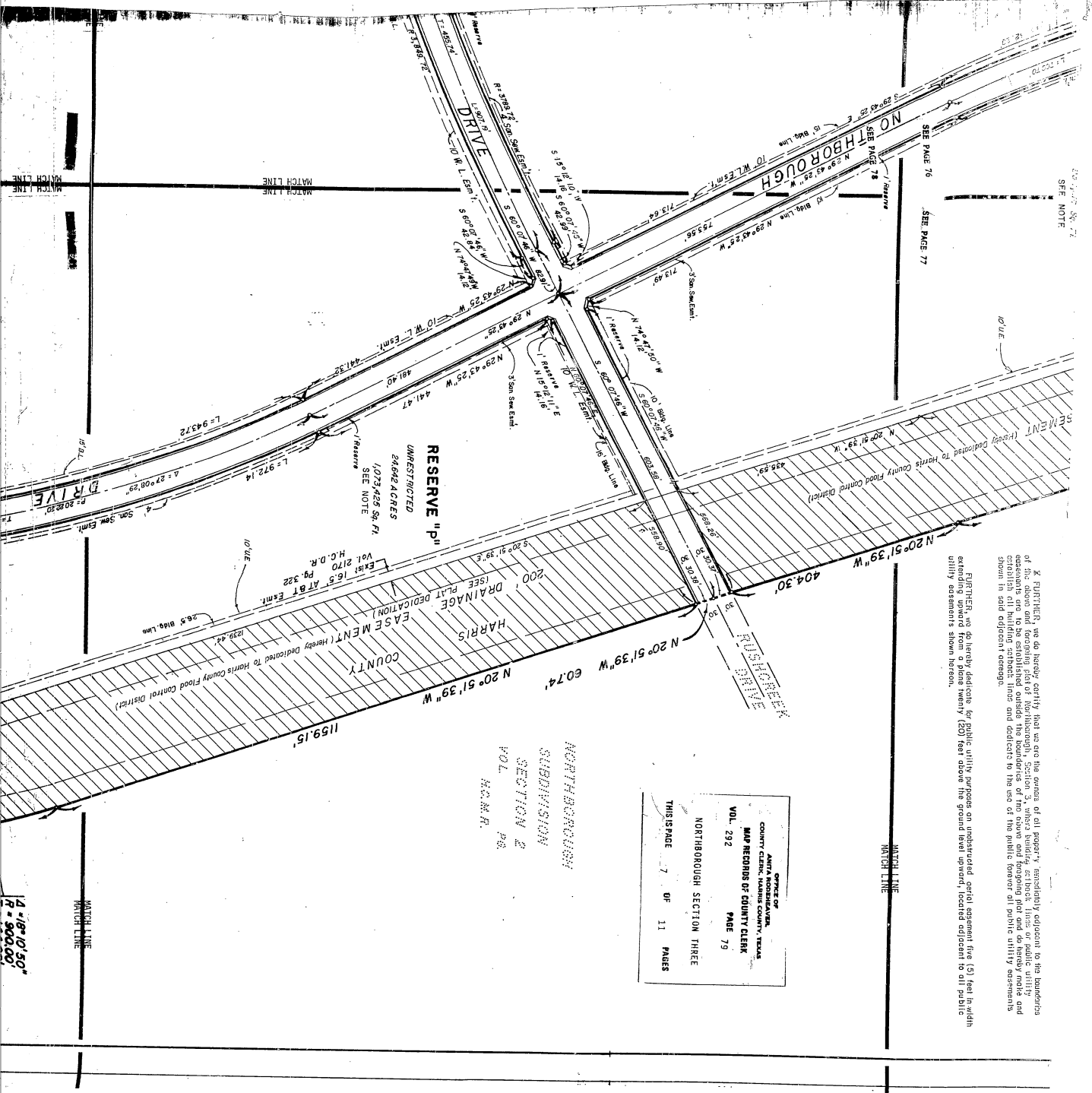
SEE PAGE 79

SEE PAGE 77

NORTHBOROUGH
N 29° 43' 25" W 713.64'
S 29° 43' 25" W 713.64'
N 29° 43' 25" W 713.64'
S 29° 43' 25" W 713.64'

DRIVE

RUSHCREEK



WE FURTHER do hereby certify that we are the owners of all property, immediately adjacent to the boundaries of the above described subdivision, and that we have no objection to the dedication of the public utility easements set to be established outside the boundaries of two above and foregoing plat and do hereby make and establish all building setbacks, lines and dedications to the use of the public power all public utility easements shown in said adjacent charge.

FURTHER, we do hereby dedicate for public utility purposes an unobstructed aerial easement five (5) feet in width extending upward from a plane twenty (20) feet above the ground level upward, located adjacent to all public utility easements shown herein.

OFFICE OF
JANIS NORTHBOROUGH
COUNTY CLERK, HARRIS COUNTY, TEXAS
MAP RECORDS OF COUNTY CLERK
VOL. 292
PAGE 79
NORTHBOROUGH SECTION THREE
THIS IS PAGE 7 OF 11 PAGES

NORTHBOROUGH
SUBDIVISION
SECTION 2
VOL. H.C.M.R.
PAGE 6

MATCH LINE

MATCH LINE

SEE PAGE 76
SEE PAGE 77

MATCH LINE

MATCH LINE

4° 18' 10" 50"
R = 500.00'

GENERAL DATA

1. A one-foot reserve (1' reserve) is hereby dedicated to the public in fee as a buffer separation between the side or end of streets in subdivision plats where such streets abut adjacent acreage tracts. The said one-foot reserve shall be shown on the plat as a line, and shall be identified in a recorded plat, the one-foot reserve shall thereupon become vested in the public for street right-of-way purposes and the title fee thereon shall revert to and revert in the dedicatory, his heirs, assigns or successors.
2. This survey is not tied into the official city of Houston survey system and is not to be used as a basis for any other survey. This survey has not been established within 2,000 feet of this property.

LEGEND

1. "B.L." or "Bldg. Line" indicates Building Line
2. "U.E." indicates Utility Easement
3. "W.L.E." indicates Water Line Easement
4. "S.E." indicates Sewer Easement
5. "ESM" indicates Easement

APPROVED by the Commissioners' Court of Harris County, Texas this 12th day of NOVEMBER, 1974.

TOM BASS, Commissioner, Precinct 1

JOHN LINDSEY, County Judge

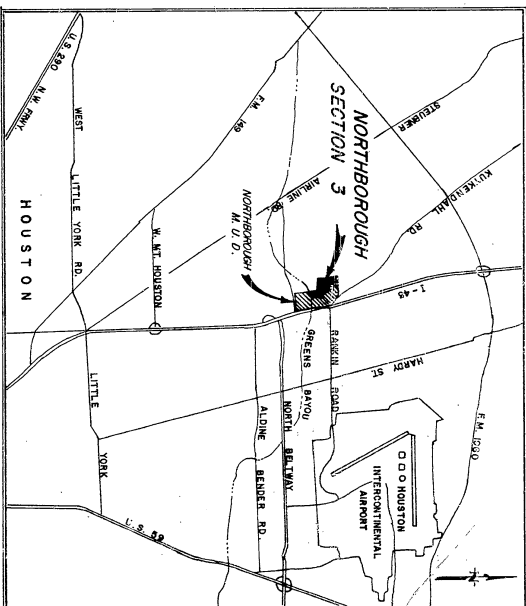
R. V. ECKLES, Commissioner, Precinct 3

JOHN LINDSEY, County Judge

I, Anita Rodabaugh, Clerk of the County Court of Harris County, do hereby certify that the within instrument with its certificate of authentication was filed for registration in my office on NOVEMBER 14, 1974 at 3:19 o'clock P. M., and in Volume 212 on Page 73 of the map records of Harris for said county.

Witness my hand and seal of office, at Houston, the day and date last above written.

THIS CERTIFICATE IS VALID ONLY AS TO THE INSTRUMENT ON WHICH THE ORIGINAL SIGNATURE OF THE CLERK OF THE COUNTY COURT OF HARRIS COUNTY, TEXAS, IS PLACED.



VICINITY MAP
SCALE 1"=2 MILES

I, Larry H. Carter, am authorized under the laws of the State of Texas to practice the profession of engineering and hereby certify that the above subdivision is true and correct; was prepared from an actual survey of the property made under my supervision on the ground that all boundary corners, block corners, angle points, points of curvature and other points of the line have been marked and shown on the ground and that the plat boundary corners have been tied to the nearest survey corner.

COUNTY CLERK, HARRIS COUNTY, TEXAS
MAP RECORDS OF COUNTY CLERK
VOL. 212 PAGE 73



Larry H. Carter
Texas Registration No 37201

NORTHBOROUGH SECTION 3

A SUBDIVISION OF 214.7345 ACRES OF LAND CONTAINING
193.714 ACRES OF UNRESTRICTED RESERVE
OUT OF THE B.B.B. & C.R.R. SURVEY, A-74 THE DANIEL
ONEAL SURVEY, A-67 AND THE PSULLIVAN SURVEY A-750
HARRIS COUNTY, TEXAS 3 RESERVES, 0 BLOCKS, 0 LOTS

OWNER:
GERBALTAR SAVINGS ASSOCIATION
HOUSTON, TEXAS
MILTON W. COWLEY, SENIOR VICE PRESIDENT
NITA CRESSLER, ASSISTANT SECRETARY

OCTOBER, 1973

ENGINEER:
J.C. JONES & CARTER, INC.
Consulting Engineers

RESERVE "S"
UNRESTRICTED
0.448 ACRES
19504 Sq. Ft.

SEE PAGE 80
MATCH LINE

SEE PAGE 81
MATCH LINE

SEE PAGE 82
MATCH LINE

SEE PAGE 83
MATCH LINE

SEE PAGE 84
MATCH LINE

SEE PAGE 85
MATCH LINE

SEE PAGE 86
MATCH LINE

SEE PAGE 87
MATCH LINE

SEE PAGE 88
MATCH LINE

SEE PAGE 89
MATCH LINE

SEE PAGE 90
MATCH LINE

SEE PAGE 91
MATCH LINE

SEE PAGE 92
MATCH LINE

SEE PAGE 93
MATCH LINE

SEE PAGE 94
MATCH LINE

SEE PAGE 95
MATCH LINE

SEE PAGE 96
MATCH LINE

SEE PAGE 97
MATCH LINE

SEE PAGE 98
MATCH LINE

SEE PAGE 99
MATCH LINE

SEE PAGE 100
MATCH LINE

SEE PAGE 101
MATCH LINE

SEE PAGE 102
MATCH LINE

SEE PAGE 103
MATCH LINE

SEE PAGE 104
MATCH LINE

SEE PAGE 105
MATCH LINE

SEE PAGE 106
MATCH LINE

SEE PAGE 107
MATCH LINE

SEE PAGE 108
MATCH LINE

SEE PAGE 109
MATCH LINE

SEE PAGE 110
MATCH LINE

SEE PAGE 111
MATCH LINE

SEE PAGE 112
MATCH LINE

SEE PAGE 113
MATCH LINE

SEE PAGE 114
MATCH LINE

SEE PAGE 115
MATCH LINE

SEE PAGE 116
MATCH LINE

SEE PAGE 117
MATCH LINE

SEE PAGE 118
MATCH LINE

SEE PAGE 119
MATCH LINE

SEE PAGE 120
MATCH LINE

SEE PAGE 121
MATCH LINE

SEE PAGE 122
MATCH LINE

SEE PAGE 123
MATCH LINE

SEE PAGE 124
MATCH LINE

SEE PAGE 125
MATCH LINE

SEE PAGE 126
MATCH LINE

SEE PAGE 127
MATCH LINE

SEE PAGE 128
MATCH LINE

SEE PAGE 129
MATCH LINE

SEE PAGE 130
MATCH LINE

SEE PAGE 131
MATCH LINE

SEE PAGE 132
MATCH LINE

SEE PAGE 133
MATCH LINE

SEE PAGE 134
MATCH LINE

SEE PAGE 135
MATCH LINE

SEE PAGE 136
MATCH LINE

SEE PAGE 137
MATCH LINE

SEE PAGE 138
MATCH LINE

SEE PAGE 139
MATCH LINE

SEE PAGE 140
MATCH LINE

SEE PAGE 141
MATCH LINE

SEE PAGE 142
MATCH LINE

SEE PAGE 143
MATCH LINE

SEE PAGE 144
MATCH LINE

SEE PAGE 145
MATCH LINE

SEE PAGE 146
MATCH LINE

SEE PAGE 147
MATCH LINE

SEE PAGE 148
MATCH LINE

SEE PAGE 149
MATCH LINE

SEE PAGE 150
MATCH LINE

SEE PAGE 151
MATCH LINE

SEE PAGE 152
MATCH LINE

SEE PAGE 153
MATCH LINE

SEE PAGE 154
MATCH LINE

SEE PAGE 155
MATCH LINE

SEE PAGE 156
MATCH LINE

SEE PAGE 157
MATCH LINE

SEE PAGE 158
MATCH LINE

SEE PAGE 159
MATCH LINE

SEE PAGE 160
MATCH LINE

SEE PAGE 161
MATCH LINE

SEE PAGE 162
MATCH LINE

SEE PAGE 163
MATCH LINE

SEE PAGE 164
MATCH LINE

SEE PAGE 165
MATCH LINE

SEE PAGE 166
MATCH LINE

SEE PAGE 167
MATCH LINE

SEE PAGE 168
MATCH LINE

SEE PAGE 169
MATCH LINE

SEE PAGE 170
MATCH LINE

SEE PAGE 171
MATCH LINE

SEE PAGE 172
MATCH LINE

SEE PAGE 173
MATCH LINE

SEE PAGE 174
MATCH LINE

SEE PAGE 175
MATCH LINE

SEE PAGE 176
MATCH LINE

SEE PAGE 177
MATCH LINE

SEE PAGE 178
MATCH LINE

SEE PAGE 179
MATCH LINE

SEE PAGE 180
MATCH LINE

SEE PAGE 181
MATCH LINE

SEE PAGE 182
MATCH LINE

SEE PAGE 183
MATCH LINE

SEE PAGE 184
MATCH LINE

SEE PAGE 185
MATCH LINE

SEE PAGE 186
MATCH LINE

SEE PAGE 187
MATCH LINE

SEE PAGE 188
MATCH LINE

SEE PAGE 189
MATCH LINE

SEE PAGE 190
MATCH LINE

SEE PAGE 191
MATCH LINE

SEE PAGE 192
MATCH LINE

SEE PAGE 193
MATCH LINE

SEE PAGE 194
MATCH LINE

SEE PAGE 195
MATCH LINE

SEE PAGE 196
MATCH LINE

SEE PAGE 197
MATCH LINE

SEE PAGE 198
MATCH LINE

SEE PAGE 199
MATCH LINE

SEE PAGE 200
MATCH LINE

SEE PAGE 201
MATCH LINE

SEE PAGE 202
MATCH LINE

SEE PAGE 203
MATCH LINE

SEE PAGE 204
MATCH LINE

SEE PAGE 205
MATCH LINE

SEE PAGE 206
MATCH LINE

SEE PAGE 207
MATCH LINE

SEE PAGE 208
MATCH LINE

SEE PAGE 209
MATCH LINE

SEE PAGE 210
MATCH LINE

SEE PAGE 211
MATCH LINE

SEE PAGE 212
MATCH LINE

SEE PAGE 213
MATCH LINE

SEE PAGE 214
MATCH LINE

SEE PAGE 215
MATCH LINE

SEE PAGE 216
MATCH LINE

SEE PAGE 217
MATCH LINE

SEE PAGE 218
MATCH LINE

SEE PAGE 219
MATCH LINE

SEE PAGE 220
MATCH LINE

SEE PAGE 221
MATCH LINE

SEE PAGE 222
MATCH LINE

SEE PAGE 223
MATCH LINE

SEE PAGE 224
MATCH LINE

SEE PAGE 225
MATCH LINE

SEE PAGE 226
MATCH LINE

SEE PAGE 227
MATCH LINE

SEE PAGE 228
MATCH LINE

SEE PAGE 229
MATCH LINE

SEE PAGE 230
MATCH LINE

SEE PAGE 231
MATCH LINE

SEE PAGE 232
MATCH LINE

SEE PAGE 233
MATCH LINE

SEE PAGE 234
MATCH LINE

SEE PAGE 235
MATCH LINE

SEE PAGE 236
MATCH LINE

SEE PAGE 237
MATCH LINE

SEE PAGE 238
MATCH LINE

SEE PAGE 239
MATCH LINE

SEE PAGE 240
MATCH LINE

SEE PAGE 241
MATCH LINE

SEE PAGE 242
MATCH LINE

SEE PAGE 243
MATCH LINE

SEE PAGE 244
MATCH LINE

SEE PAGE 245
MATCH LINE

SEE PAGE 246
MATCH LINE

SEE PAGE 247
MATCH LINE

SEE PAGE 248
MATCH LINE

SEE PAGE 249
MATCH LINE

SEE PAGE 250
MATCH LINE

SEE PAGE 251
MATCH LINE

SEE PAGE 252
MATCH LINE

SEE PAGE 253
MATCH LINE

SEE PAGE 254
MATCH LINE

SEE PAGE 255
MATCH LINE

SEE PAGE 256
MATCH LINE

SEE PAGE 257
MATCH LINE

SEE PAGE 258
MATCH LINE

SEE PAGE 259
MATCH LINE

SEE PAGE 260
MATCH LINE

SEE PAGE 261
MATCH LINE

SEE PAGE 262
MATCH LINE

SEE PAGE 263
MATCH LINE

SEE PAGE 264
MATCH LINE

SEE PAGE 265
MATCH LINE

SEE PAGE 266
MATCH LINE

SEE PAGE 267
MATCH LINE

SEE PAGE 268
MATCH LINE

SEE PAGE 269
MATCH LINE

SEE PAGE 270
MATCH LINE

SEE PAGE 271
MATCH LINE

SEE PAGE 272
MATCH LINE

SEE PAGE 273
MATCH LINE

SEE PAGE 274
MATCH LINE

SEE PAGE 275
MATCH LINE

SEE PAGE 276
MATCH LINE

SEE PAGE 277
MATCH LINE

SEE PAGE 278
MATCH LINE

SEE PAGE 279
MATCH LINE

SEE PAGE 280
MATCH LINE

SEE PAGE 281
MATCH LINE

SEE PAGE 282
MATCH LINE

SEE PAGE 283
MATCH LINE

SEE PAGE 284
MATCH LINE

SEE PAGE 285
MATCH LINE

SEE PAGE 286
MATCH LINE

SEE PAGE 287
MATCH LINE

SEE PAGE 288
MATCH LINE

SEE PAGE 289
MATCH LINE

SEE PAGE 290
MATCH LINE

SEE PAGE 291
MATCH LINE

SEE PAGE 292
MATCH LINE

SEE PAGE 293
MATCH LINE

SEE PAGE 294
MATCH LINE

SEE PAGE 295
MATCH LINE

SEE PAGE 296
MATCH LINE

SEE PAGE 297
MATCH LINE

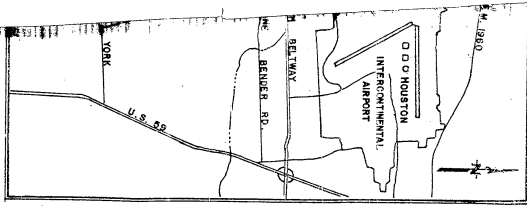
SEE PAGE 298
MATCH LINE

SEE PAGE 299
MATCH LINE

SEE PAGE 300
MATCH LINE

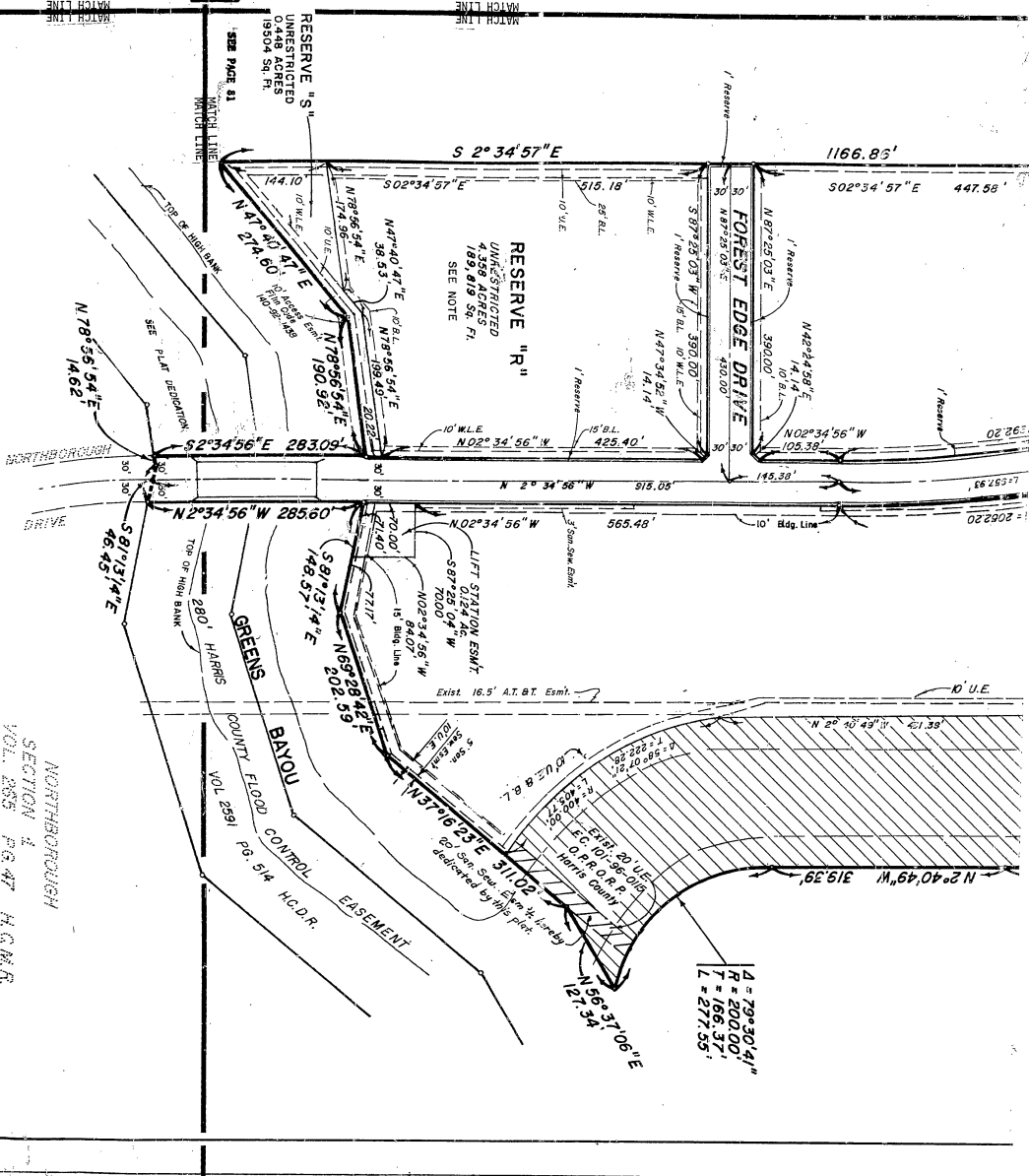
SEE PAGE 301
MATCH LINE

SEE PAGE 302
MATCH LINE



CONTAINING
 ERYE
 E DANIEL
 VEY A-750
 O LOTS

ENGINEER:
J.C. JONES & CARTER, INC.
 Consulting Engineers



NORTHBOROUGH
 SECTION 4
 VOL. 285 PG. 47 H.C.M.R.

OFFICE OF
 COUNTY CLERK, HARRIS COUNTY, TEXAS
 MAP RECORDS OF COUNTY CLERK
 PAGE 83
 NORTHBOROUGH SECTION THREE
 THIS MAP IS IN THE
 PUBLIC RECORDS